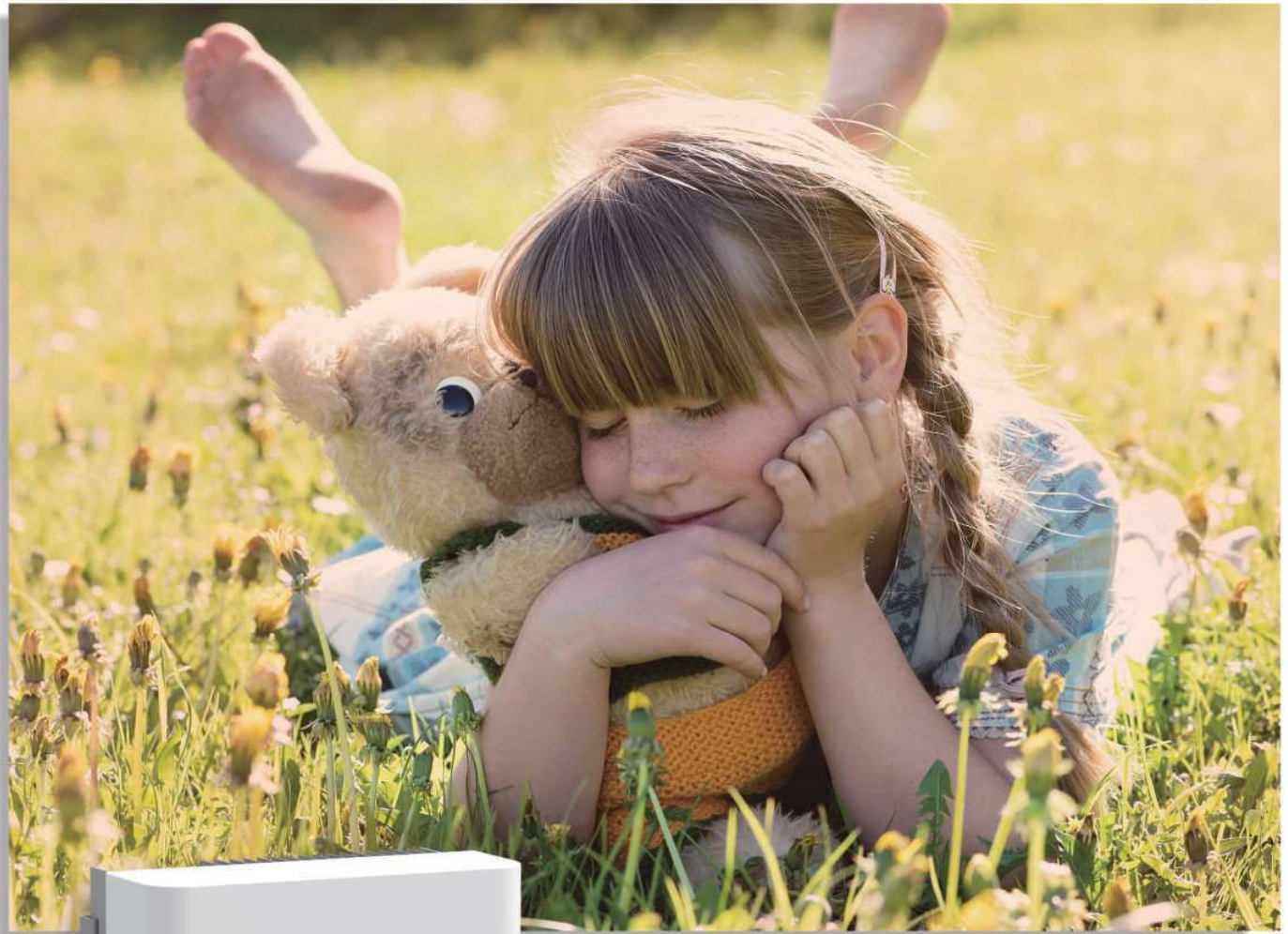


# Single Phase String Inverter

SUN- 3.6 / 4 / 4.2 / 5 / 5.2 / 6 / 6.2 K-G03



2 MPP trackers, Max. efficiency up to 97.5%



Zero export application, VSG application



String intelligent monitoring (optional)



Wide output voltage range



Anti-PID function (Optional)



Low start-up voltage of 80V

## Technical Data

Model	SUN-3.6K-G03	SUN-4K-G03	SUN-4.2K-G03	SUN-5K-G03	SUN-5.2K-G03	SUN-6K-G03	SUN-6.2K-G03
<b>Input Side</b>							
Max. DC Input Power (kW)	4.7	5.2	5.5	6.5	6.8	7.8	8.1
Max. DC Input Voltage (V)	550						
Start-up DC Input Voltage (V)	80						
MPPT Operating Range (V)	70-500						
Max. DC Input Current (A)	18+18						
Max. Short Circuit Current (A)	27+27						
No. of MPP Trackers	2						
No. of Strings per MPP Tracker	1+1						
<b>Output Side</b>							
Rated Output Power (kW)	3.6	4	4.2	5	5.2	6	6.2
Max. Active Power (kW)	3.96	4.4	4.62	5.5	5.72	6.6	6.82
Rated Output Voltage/Range (V)	3L/N/PE 220/380V, 230/400V 0.85Un-1.1Un (this may vary with grid standards)						
Rated Grid Frequency (Hz)	50 / 60 (Optional)						
Operating Phase	Single phase						
Rated AC Grid Output Current (A)	15.7	17.4	18.3	21.7	22.6	26.1	27
Max. AC Output Current (A)	17.2	19.1	20.1	23.9	24.9	28.7	29.7
Output Power Factor	0.8 leading to 0.8 lagging						
Grid Current THD	<3%						
DC Injection Current (mA)	<0.5%						
Grid Frequency Range	45-55 or 55-65 (Optional)						
<b>Efficiency</b>							
Max. Efficiency	97.3%	97.5%	97.5%	97.5%	97.5%	97.5%	97.5%
Euro Efficiency	97.1%	97.3%	97.3%	97.3%	97.3%	97.3%	97.3%
MPPT Efficiency	>99%						
<b>Protection</b>							
DC Reverse-Polarity Protection	Yes						
AC Short Circuit Protection	Yes						
AC Output Overcurrent Protection	Yes						
Output Overvoltage Protection	Yes						
Insulation Resistance Protection	Yes						
Ground Fault Monitoring	Yes						
Anti-islanding Protection	Yes						
Temperature Protection	Yes						
Integrated DC Switch	Yes						
Remote software upload	Yes						
Remote change of operating parameters	Yes						
Surge protection	DC Type II / AC Type II						
<b>General Data</b>							
Size (mm)	330W×323H×190D (Excluding connectors and brackets)						
Weight (kg)	8						
Topology	Transformerless						
Internal Consumption	<1W (Night)						
Running Temperature	-25 to +60βF, >45βF derating						
Ingress Protection	IP65						
Noise Emission (Typical)	≤35 dB						
Cooling Concept	Natural cooling						
Max. Operating Altitude Without Derating	2000m						
Warranty	8 years						
Grid Connection Standard	IEC 61727, IEC 62116, CEI 0-21, EN 50549, NRS 097, RD 140, UNE 217002, G99, VDE-AR-N 4105						
Operating Surroundings Humidity	0-100%						
Safety EMC / Standard	IEC/EN 61000-6-1/2/3/4, IEC/EN 62109-1, IEC/EN 62109-2						
<b>Features</b>							
Display	LCD1602						
Interface	RS485/RS232/Wifi/LAN						